

# 数控电源钣金外壳（S12D） 组装说明

## Digital power supply case (S12D) assembly instruction

外壳适用数控电源型号：RD6006/RD6006-W/RD6012/RD6012-W

This case is suitable for RD6006/RD6006-W/RD6012/RD6012-W

修订日期：2020. 5. 21

Date: 2020. 5. 21



# 数控电源钣金外壳（S12D）组装说明

外壳适用数控电源型号：RD6006/RD6006-W/RD6012/RD6012-W

修订日期：2020.5.21

尊敬的用户，感谢您购买由睿登科技有限公司出品的数控电源配套外壳，为了让您更快了解本产品的全部功能，获得更好的使用体验，避免出现误操作，使用前请仔细阅读本说明并保留好，以便日后查阅。



# 目录 | Content

数控电源钣金外壳（S12D）组装说明.....	2
1. 注意事项： .....	4
2. 产品尺寸： .....	4
3. 配件列表： .....	5
4. 产品配件图： .....	6
5. 组装步骤： .....	6
5.1 组装准备： .....	6
5.2 组装步骤： .....	7
Digital power supply case (S12D) assembly instruction.....	11
1. Notes.....	13
2. Product Dimension.....	13
3. Accessory List.....	14
4. Accessory Picture .....	15
5. Assembly Procedure.....	15
5.1 Assembly Preparation.....	15
5.2 Assembly Step .....	16

## 1. 注意事项：

- 组装前请仔细阅读本文档，如有疑问请与本公司联系。
- 本外壳采用冷轧钢板材料，表面喷塑，组装、使用时应防止尖锐物体划伤，避免阳光直晒和潮湿环境。
- 组装时防止短路，正确连接正负极。
- 不可在电源接通的情况下连接电路。
- 尽量避免震动和跌落。

## 2. 产品尺寸：



### 3. 配件列表：

名称	规格	数量	图片
上盖板	S12D 上盖板	1	
下盖板	S12D 下盖板	1	
连接电线	红色：2 根 黑色：1 根	3	
接线端子	M4*36	2	
船型开关	KCD3	1	
防滑脚垫	Φ13*4	4	
脚垫固定螺丝	M3*5*7	4	
外壳固定螺丝	M3*6 平头白色	8	

## 4. 产品配件图：



## 5. 组装步骤：

### 5.1 组装准备：

- 数控电源 RD 系列电源一台，S12D 一套。
- 工具，附件（直流稳压电源，十字螺丝刀）。
- 适当的组装环境。

注：外壳质地较软，运输中可能会产生轻微的变形，如果组装的时候产生缝隙，请轻轻掰直后再组装。

## 5.2 组装步骤：

1. 配件检查：对照配件列表或配件图检查 S12D 的配件是否完整。
2. 安装接线端子及开关：将接线端子和船型开关安装到后面板预留位置，接线端子采用上正（红）下负（黑）进行安装，接线端子上固定的螺丝拧紧。



3. 安装连接线：将准备好的连接线连接到开关和接线端子上，并用螺母拧紧，接线完成请参照下图。

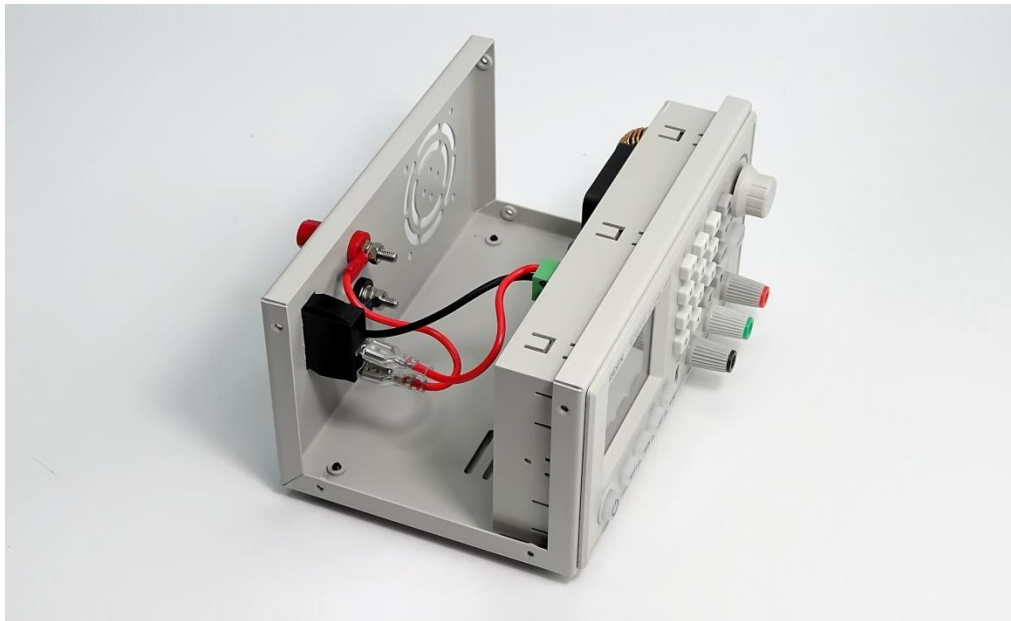


4. 端子接线，RD6012/RD6012-W 将 U 型插直接拧到接线端子上，RD6006/RD60006-W 将 U 型插剪掉一头之后拧到端子上。



5. 电源安装：将电源卡到壳子上，然后将绿色端子与电源连接，并将外接传感器线接好。





6. 连接好之后用直流稳压电源 12V1A 通电查看是否连接正确。（注意通电前再次检查接线是否正确）
7. 安装上盖，将上盖装配到下壳，并用配套螺丝固定好。



8. 本产品配有四个防滑脚垫，使用配套螺丝将其固定好即可。



## Digital power supply case (S12D) assembly instruction

This case is suitable for RD6006/RD6006-W/RD6012/RD6012-W

Date: 2020. 5. 21

Dear users, thank you for purchasing the digital power supply accessory-metal case produced by Hangzhou Ruideng Technology Co., Ltd. In order to let you know more about the full function of this product, get a better experience and avoid misuse. Please read this instruction carefully before assembly. Keep it for future reference.



# 目录 | Content

数控电源钣金外壳（S12D）组装说明.....	2
1. 注意事项： .....	4
2. 产品尺寸： .....	4
3. 配件列表： .....	5
4. 产品配件图： .....	6
5. 组装步骤： .....	6
5.1 组装准备： .....	6
5.2 组装步骤： .....	7
Digital power supply case (S12D) assembly instruction.....	11
1. Notes.....	13
2. Product Dimension.....	13
3. Accessory List.....	14
4. Accessory Picture .....	15
5. Assembly Procedure.....	15
5.1 Assembly Preparation.....	15
5.2 Assembly Step .....	16

## 1. Notes

- Read this instruction carefully before assembly, if you still have question, please contact us.
- This case is made of cold-rolled steel plate and the surface is sprayed. When assembling and using, prevent it from scratching by sharp objects, and avoid direct sunlight and humid environment.
- Avoid short circuit when assembling, connect the electrodes correctly.
- NEVER connect the cables with the power ON.
- Try to avoid vibration and fall.

## 2. Product Dimension



### 3. Accessory List

NAME	SPECIFICATION	QUANTITY	PICTURE
Upper Board	S12D	1	
Lower Board	S12D	1	
Cables	RED: 2 BLACK: 1	3	
Female Banana Socket	M4*36	2	
Rocker switch	KCD3	1	
Non-slip mat	Φ13*4	4	
Mat fixing screws	M3*5*7	4	
case fixing screws	M3*6 flat head white	8	

## 4. Accessory Picture



A: Upper Board	B: Lower Board
C: Non-slip Mats	D: Screws for Non-slip Mats
E: Case Fixing Screws	F: Cables
G: Rocker Switch	H: Female Banana Socket

## 5. Assembly Procedure

### 5.1 Assembly Preparation

- RD series digital power supply\*1, S12D case\*1

- Tools, accessory (DC power supply, screw driver)
- Proper assembly environment

**Note:** The case material is a bit soft and may be slightly deformed during transportation. If there is a gap during the assembly, please straighten it before assemble it.

## 5.2 Assembly Step

1. Check the accessories:

Check if the accessories of S12D are same as accessory list or accessory picture.

2. Install the female banana sockets and switch:

Please put the female banana sockets and rocker switch on the corresponding position of back board, the red female banana socket is positive electrode and the black female banana socket is negative electrode. Screw the fixing screws.



3. Connect cables

Use cables to connect switch and female banana sockets, and tighten with nuts, the wiring is completed, you can see the final connection below:





4. Connect the terminals, you can connect the U-shaped plug directly to the green terminal of RD6012/RD6012-W, and you need to cut off one side of U-shaped plug and connect them to the green terminal of RD6006/RD6006-W.



5. Install the RD power supply: install the power supply on the front, and insert the green terminal to the power supply, and then connect the external temperature sensor.



6. Use 12V/1A DC power source to power on the RD series power supply, check if the connection succeeds (check the wiring before power on)
7. Install the upper board: install the upper board on lower board, and use screws to fix it.



8. There are four Non-slip mats, please use screws to fix them.

